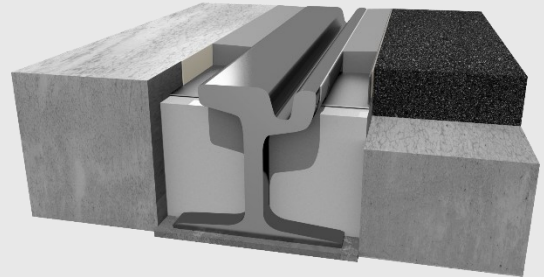




EUROTEAM

EUROLASTIC TC 30 G rail

2K polysulfide rail potting compound, pourable, plant-optimized with a ZGV of 25%, tested according to ZTV Fug StB 15 and DIN EN 14188-2



PRODUCT DESCRIPTION	<p>EUROLASTIC TC 30 G rail is a two-component sealant for joints with practical expansions up to 25% of the joint width.</p> <p>The product is pourable, medium viscosity and suitable for horizontal floor joints.</p>
SCOPE	<ul style="list-style-type: none">- Preferably used for filling floor and connection joints between concrete and metal components and cut asphalt surfaces, which are exposed not only to mechanical stresses from vehicular and pedestrian traffic or- temperature-dependent movement of the components, but also to chemical stresses from fuels and de-icing salts. The main application of Eurolastic TC 30 G rail is in railway construction, as its elastic properties optimally accommodate the different movements between the rail and the road surface. When installed correctly, Eurolastic TC 30 G rail seals the rail joint and thus prevents the penetration of moisture.
PRODUCT FEATURES	<ul style="list-style-type: none">- elastic- 2-component, isocyanate-free- machine-processable- elastic and durable over a wide temperature range (-40°C to +120°C)- Resistant to fuels, oils, de-icing salts and a variety of other substances other media according to the chemical resistance list- high notch strength- excellent cold elasticity- Partially repairable (by cold vulcanization)- UV and weather resistant- non-sticky even at high temperatures
COLOR	<ul style="list-style-type: none">- Grey



EUROTEAM

SUBSTRATE PREPARATION

- Rail body: The bonding surfaces of the rail body must be cleaned and blasted to remove solids/slag before applying the EUROLASTIC ZM primer (cleanliness grade SA 2½).
- Concrete:
The concrete bonding surfaces must be clean, free of oil and grease, dry and free of separating substances before applying the EUROLASTIC U12G primer.
- Mastic asphalt/asphalt or semi-rigid pavements:
Before applying the primer EUROLASTIC U12G AS / EUROLASTIC S2, the bonding surfaces must be wet cut/ground with a diamond tool, clean, free of oil and grease, dry and free of any separating substances.
If the joint chambers have been milled, the joint flanks must be blasted with solids.
Cleaning the joint cavities after blasting must only be done by blowing them out with oil-free air or vacuuming them with an industrial vacuum cleaner. Do not brush them afterwards with a wire brush!
Due to the wide variety of grades of bituminous coatings, we generally recommend conducting adhesion tests beforehand.
EUROLASTIC TC 30 G rail should only be applied to primed surfaces.
Detailed information on primer selection, drying time, and open time can be found in the primer matrix.
Generally:
polysulfide-based may remain on the joint flanks.
Furthermore, as part of the substrate preparation, surfaces with
- cement/sinter skin adhesions must be addressed.
Pre-treat formed surfaces, precast concrete elements, etc. by grinding or cutting with a diamond tool.

BACKFILL

Before applying the grout, the joint chambers must be backfilled with polyfold trapezoid, EUROTape rail or EUROFILL SBR to prevent three-sided adhesion.

PRIMER

EUROLASTIC TC 30 G rail should only be applied to primed surfaces. The following procedure is recommended for rails with mastic asphalt/asphalt covering:
After solid blasting of the rail and the asphalt flank, the joint chambers are to be cleaned using an industrial vacuum cleaner and the desired backfill is to be applied.
First, apply the EUROLASTIC Primer ZM to the rail body. Then apply the EUROLASTIC Primer.



EUROTEAM

Apply U 12 G AS to the asphalt edge. After both primers have hardened (no tackiness when touched with a finger), apply the EUROLASTIC Primer S2 by brushing or by applying it with a bucket sprayer and round jet nozzle. It is important to ensure that the joint surfaces are evenly and completely coated. After the EUROLASTIC Primer S2 has dried (approx. 10 min), the sealant can be applied.

Absorbent surfaces:

EUROLASTIC Primer U 12 G

Non-absorbent surfaces:

EUROLASTIC Primer S 2

Bare steel/galvanized surfaces:

EUROLASTIC Primer ZM, after curing, apply EUROLASTIC Primer S2

Mastic asphalt/asphalt:

EUROLASTIC Primer U 12 G AS, after curing, apply EUROLASTIC Primer S2

Further details: see primer matrix

PROCESSING CONDITIONS

- Material temperature during manual processing:
min. +10°C, max. +25°C
- Material temperature during machine processing:
min. +10°C, max. +60°C
- Ambient temperature: between +5°C and +40°C
The substrate temperature must be in the range of +5°C to +35°C and a temperature of the bonding surfaces of at least 3°C above the prevailing dew point temperature.

PROCESSING

- The joints to be filled must be clean, dry, and free of loose particles, mortar residue, dust, grease, dirt, and the like. The temperature (measured on the component) must not fall below +5°C or exceed +40°C. The temperature of the joint sealant should be at least +10°C during application. For absorbent substrates (concrete), the bonding surfaces must be pre-treated with primer.
To prevent the potting compound from running off unintentionally, care must be taken to ensure that neither
The joint edges or joint base should not have holes, cracks or similar defects.
Components A and B of EUROLASTIC TC 30 G rail must now be mixed. For this purpose, the separately packaged B-component was placed into the container of the A-component and a suitable tool was used.
(e.g., using a paddle mixer) mix until no more streaks of color appear.
Attention should be paid to this.
Make sure no air is incorporated – stir at a low speed!

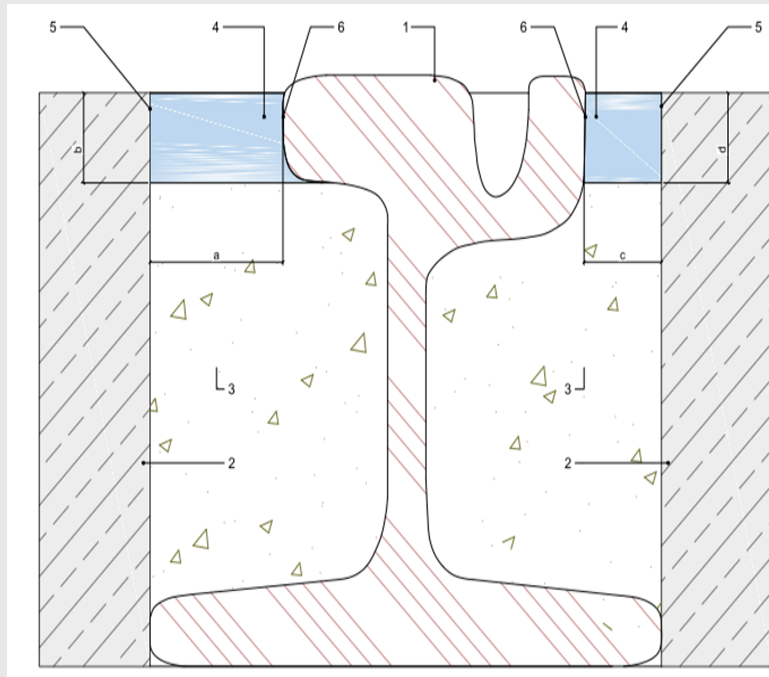


EUROTEAM

The sealant prepared in this way is applied to the cavity using suitable tools (e.g., hand-held or pneumatic guns).
Joints were filled. Any air bubbles that may rise should be removed within the working time by lightly...
Remove any excess paint with a soft flat brush or smoothing stick.



EUROTEAM



Beschreibung:

- 1 Rillenschiene
- 2 Oberbau Gussasphalt
- 3 Kammerstein
- 4 Fugenverguss
- 5 Voranstrich Primer 1 bei Asphalt (EUROLASTIC PRIMER U12G AS) / bei Beton (EUROLASTIC PRIMER U12G)
- 6 Voranstrich Primer 2 EUROLASTIC PRIMER ZM (Korrosionsschutz) + EUROLASTIC PRIMER S2

Mass		
variable	Description	Mass
a	Driving head - joint width	Depending on the installation situation,
b	Driving head - joint depth	Approx. 34 mm
c	Guide head - joint width	Approx. 35 mm
d	Guide head - joint depth	Approx. 34 mm

CLEANING

The tools can be cleaned with EUROLASTIC Cleaner G when fresh material is present. Once the material has fully reacted, they can only be cleaned mechanically.



EUROTEAM

CONSUMPTION	<table border="1"><thead><tr><th>Joint width in mm</th><th>Joint depth in mm</th><th>consumption in ml/m</th></tr></thead><tbody><tr><td>10</td><td>10</td><td>approximately 100</td></tr><tr><td>15</td><td>12 - 15</td><td>approx. 180 - 225</td></tr><tr><td>20</td><td>16 - 20</td><td>approximately 320 - 400</td></tr><tr><td>25</td><td>20 - 25</td><td>approximately 500 - 625</td></tr><tr><td>30</td><td>24 - 30</td><td>approximately 720 - 900</td></tr><tr><td>35</td><td>28 - 35</td><td>ca. 980 - 1225</td></tr><tr><td>40</td><td>32 - 40</td><td>ca. 1280 - 1600</td></tr></tbody></table>	Joint width in mm	Joint depth in mm	consumption in ml/m	10	10	approximately 100	15	12 - 15	approx. 180 - 225	20	16 - 20	approximately 320 - 400	25	20 - 25	approximately 500 - 625	30	24 - 30	approximately 720 - 900	35	28 - 35	ca. 980 - 1225	40	32 - 40	ca. 1280 - 1600
	Joint width in mm	Joint depth in mm	consumption in ml/m																						
	10	10	approximately 100																						
	15	12 - 15	approx. 180 - 225																						
	20	16 - 20	approximately 320 - 400																						
	25	20 - 25	approximately 500 - 625																						
	30	24 - 30	approximately 720 - 900																						
	35	28 - 35	ca. 980 - 1225																						
40	32 - 40	ca. 1280 - 1600																							
PACKAGING	EUROLASTIC TC 30 G rail Available in 4l, 10l and 200l containers Delivered. Components A and B are packaged separately.																								
STORAGE AND SHELF LIFE	Store in cool and dry conditions (+10°C to +25°C). Under these conditions, the shelf life in the unopened and undamaged original container is 12 months.																								
EXAMS/ APPROVALS/STANDARDS	<ul style="list-style-type: none">- ZTV-Fug StB 15- DIN EN 14188-2																								
SPECIAL INSTRUCTIONS/PROTECTIVE MEASURES	EUROLASTIC TC 30 G rail should only be used in well-ventilated areas. Appropriate protective equipment must be worn during work. Waste and containers must be disposed of safely. Avoid release to the environment. Completely empty containers can be returned to the KBS/Interseroh recycling system. The instructions in the corresponding safety data sheet must be strictly observed.																								



EUROTEAM

TECHNICAL DATA *

TECHNICAL SPECIFICATIONS	UNIT	VALUE
Polymer base		Polysulfide
Mixing ratio A : B	Weight.- T.	100:10
Number of components		2-component
Viscosity at +23°C		Pourable
Processing time at +23°C/50% RH	min	Approximately 120
Curing time at +23°C/50% RH	h	Approximately 24
Object and processing temperature	°C	from +5 to +40
Temperature resistance	°C	from -40 to +120
E140	N/mm ²	Approximately 0.2
MECHANICAL PROPERTIES	UNIT	VALUE
Shore A hardness		approximately 26
Permissible total deformation	%	25
Tensile stress value at +23°C	N/mm ²	approximately 0.20
Tensile stress value at -20°C	N/mm ²	approximately 0.34

*These figures are guidelines only. They are not intended for creating specifications.

The data were obtained at +23°C and 50% relative humidity. Higher temperatures and/or higher relative humidity may shorten or lengthen these times. All technical data, dimensions, and information in this datasheet are based on laboratory tests. Actual measured data may differ in practice.

May 2026 / Technical changes and further developments are reserved. Any liability arising from advertising materials is excluded. Advice of any kind, including regarding any third-party intellectual property rights, is provided for informational purposes only and is non-binding. The customer is solely responsible for the suitability of the goods for their intended purpose. All orders are subject to the seller's/manufacturer's terms and conditions of sale. or the production of goods. Reprinting is not permitted.