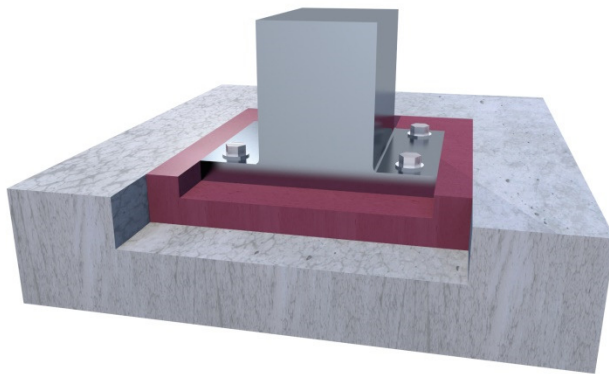




EURODUR EPH 0401 groundfix

2-component epoxy resin hybrid-based casting compound, solvent-free, pourable



Final grout: EURODUR EPV 0411 groundfix

Product description

EURODUR EPH 0401 groundfix is a 2-component, solvent-free, self-levelling epoxy resin hybrid-based casting compound.

Area of application

- for strong grouting of metal building components and built-in casings in concrete surfaces, e.g. inset lights, anchor plates, machine bases, etc.

Product characteristics

- very high impact resistance
- low viscosity
- high mechanical strength
- strong anchoring
- high flowability
- no primer required
- fast curing
- moisture tolerant
- solvent-free
- non-shrink
- self-levelling
- outstanding adhesion on concrete and metals
- excellent chemical resistance (to oils, diluted acids and alkaline solutions, saline solutions, various solvents)

Colours

Grey, additional colours upon request



Substrate preparation

Basically, **EURODUR EPH 0401 groundfix** exhibits excellent adhesion to concrete, cement-bound substrates and metals, even without primer. The substrate temperature must be within the +5°C to +35 C range. Grouting can also be carried out on damp, saturated substrates.

The bonding surfaces must be clean, free of dust, oil, grease, loose material or other contaminants and have an adhesive tensile strength of at least 2 N/mm². Metal building components must also be free of rust, zinc or paint and be metallically bright (SA 2 1/2).

Primer

Basically, **EURODUR EPH 0401 groundfix** does not require primed bonding surfaces for application. However, critical, absorbent substrates can be pre-treated with EURODUR EP 0100.

Handling

The substrate must be prepared appropriately. The grout areas must be sealed at all points. Due to its high flowability, the material can drain uncontrollably. **EUROLASTIC EPH 0401 groundfix** is always supplied with the correct ratio of components A and B. Both components must be completely combined and thoroughly mixed for at least 3 - 5 minutes using a suitable, slow-running stirrer at approx. 300 RPM. The mixing process must be carried out until a homogeneous, streak-free mixture forms. Then re-pot and briefly stir again. During this process, the temperature should be between +5°C and +25°C. The mixture can be poured directly from the container into the prepared areas or placed in a hand-held caulking gun. Apply or pour immediately, as the reaction begins immediately.

Grouting inset lights

1)Substrate pre-treatment: see above

2)Setting casing:

Place mortar setting bed, consisting of EUROREPAIR HG 96 (primer) and PC 96 (EP mortar), in the hole, set casing with setting gauge and align in accordance with direction mark. Make sure that the resulting joint gap is uniform all around.

3)Fixing grout:

After setting mortar has hardened, mix the **EURODUR EPH 401 groundfix** casting compound and fill with fire-dried quartz



sand (0.1-0.6 mm) up to max. 1/1, depending on temperature and desired flowability.

Pour evenly into the existing joint gap to within approx. 1 cm of the hole rim.

4)Final grout:

The final grouting can take place 1 hour after placement of the fixing grout. The casting compound should be used without filler for this purpose.

Re-workability:

EURODUR EPH 0401 groundfix can be reworked/ground and re-grouted at any time without problems. Make sure that the material to be reworked is already cured, clean and free of substances that could interfere with adhesion (oil, grease, or similar).

Cleaning	Fresh material can be removed from the tools with EUROLASTIC Cleaner G. Fully cured material requires mechanical cleaning.
Consumption	Unfilled: approx. 1.50 kg per 1.0 litre. Filled: approx. 1.75 kg per 1.0 litre (incl. sand filler)
Packaging	EURODUR EPH 0401 groundfix is delivered in 1 kg, 6 kg and 10 kg containers. A and B components are packaged separately.
Storage and shelf life	Store in a cool, dry place (+10°C to +25°C). Under these conditions, the shelf life of unopened and undamaged original containers is 12 months.
Special instructions/protective measures	EURODUR EPH 0401 groundfix may only be processed in well-ventilated areas. Suitable protective clothing must be worn when working. Waste and containers must be disposed of in a safe manner. Avoid release into the environment. Completely empty containers can be returned to the KBS/Interseroh circulatory system. The instructions in the corresponding safety data sheet must be strictly adhered to.



Technical data*		
Technical properties	Unit	Value
Material basis		epoxy resin hybrid
Mixture ratio A : B	Parts by	100 : 15.6
Number of components		2-component
Density at +23°C	g/cm ³	1.44
Viscosity at +23°C	Pa.s	5:-10
Processing time/pot life at +23°C/50% relative humidity	min	approx. 10-15
Curing time at +23°C/50% relative	hrs	approx. 2 - -3
Re-workability at +23°C/50% relative	hrs	after approx. 4
Object and processing temperature	°C	at least +5
	°C	max. +35
Temperature resistance	°C	at least -40
	°C	max. +100
Mechanical properties	Unit	Value
Shore-D hardness (14 days)		approx. 60

* These are approximate values. The values are not intended for the preparation of specifications.

The data was calculated at +23°C and 50% relative humidity. Higher temperatures and/or higher relative humidity may shorten or extend these times. All technical data, measurements and information in this data sheet are based on laboratory tests. Actual measured data may deviate in practice.

September 2015/We reserve the right to make technical changes and refinements. No liability assumed for advertising documents. Consultation of any kind, also due to any industrial property rights of third parties, shall be considered non-binding. The customer is solely responsible for the suitability of the goods for the particular intended use. All orders are subject to the seller's/manufacturer's terms and conditions for the sale and/or manufacture of the goods.
Reproduction not permitted.