



System solutions

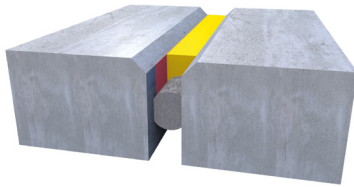
for highly stressed joints in aircraft movement areas




EUROLASTIC TC 30 G traffic

Approved, highly chemical and weather-resistant 2-component polysulphide sealant with very fast curing

EUROLASTIC TC 30 G traffic is a high-performance sealant that is approved by the DIBt (German Institute of Building Technology). This fast-acting polysulphide joint sealant is suitable for both renovation and new construction. Its two-component system enables rapid application and short curing time, resulting in short block-off times. The polysulphide sealant is the ideal sealant for special applications in road construction. In addition, this joint sealant has all of the features that distinguish a polysulphide. It is chemical-resistant, self-levelling, locally repairable and cold vulcanising, enabling

the interfaces in partial renovations or local repairs to bond quickly and permanently. It also exhibits high resistance to UV, weathering and ageing. At temperatures below freezing, it retains its resilience and remains tack-free, even at high temperatures. Different primers for substrate pre-treatment and adhesion improvement ensure problem-free installation on diverse substrates.



-  Joint sealant: EUROLASTIC TC 30 G traffic
-  Primer: EUROLASTIC Primer U 12 G traffic or EUROLASTIC Primer S2
-  Backing material: Round PE cord (closed-cell)



>> FULLY CURED AND TRAVERSABLE <<

SYSTEM FEATURES

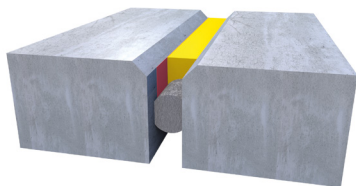
- Chemical-resistant
- May be driven over by pneumatic and vulcanised tyres
- Approved total deformation 35%
- Outstanding cold resilience
- High notching resistance
- High UV and weathering resistance
- Tack free, even at high temperatures
- High resistance to ageing
- Very fast curing
- Complies with: ZTV Fug StB | DIN EN 14188-2
- National technical approval



EUROLASTIC TC 30 G/S

Approved, highly chemical and weather-resistant
2-component polysulphide sealant

EUROLASTIC TC 30 G/S are high-performance polysulphide sealants for building component and connection joints in walkways and traffic areas. Due to the high chemical resistance, high resilience and outstanding weathering resistance, these are optimal sealants for storage, filling and handling facilities for water-polluting substances. Thanks to the cold vulcanisation capability, junctions join without problems in a partial renovation. The sealants possess outstanding handling properties and have a short curing time due to the 2-component system.



- Joint sealant: EUROLASTIC TC 30 G
- Primer: EUROLASTIC Primer U 12 G or EUROLASTIC Primer S2
- Backing material: Round PE cord (closed-cell)

SYSTEM FEATURES

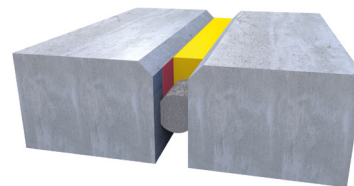
- Highly chemical-resistant
- Self-levelling and non-sag formula
- High notching resistance
- High UV and weathering resistance
- EUROLASTIC TC 30 G black approved total deformation 35%
- EUROLASTIC TC 30 G grey approved total deformation 25%
- Installation depth up to 1.6 times the joint width
- EUROLASTIC TC 30 S black, grey approved total deformation 25%
- National technical approval
- Approved for Polish military airfields, tested by the AIR FORCE INSTITUTE OF TECHNOLOGY, Warsaw
- Complies with ZTV Fug StB | DIN EN 14188-2



EUROLASTIC TC 20 G

Highly resilient 2-component polysulphide sealant
with an approved total deformation of 35%

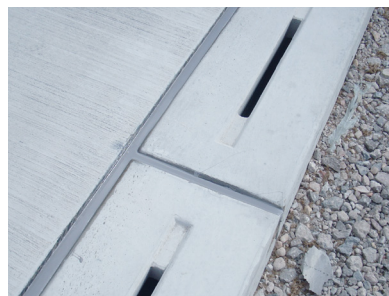
EUROLASTIC TC 20 G in black is a self-levelling 2-component polysulphide sealant for building component and connection joints in walkways and traffic areas with high chemical and weathering resistance, especially for warehouse and production areas. The polysulphide sealant is suitable for the creation or renovation of horizontal joints (floor joints) that must be mechanically stressed within a short time and do not fall into the category of storage, filling and handling facilities for water polluting substances, e.g. warehouse and production areas, container terminals, pavement grouting, haulage areas, etc.



- Joint sealant: EUROLASTIC TC 20 G black
- Primer: EUROLASTIC Primer U 12 G
- Backing material: Round PE cord (closed-cell)

SYSTEM FEATURES

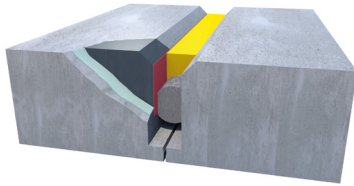
- Chemical-resistant
- May be driven over by pneumatic and vulcanised tyres
- Approved total deformation 35%
- For mechanical application
- High notching resistance
- High UV and weathering resistance
- Outstanding cold resilience
- High resistance to ageing
- Complies with ZTV Fug StB | DIN EN 14188-2



EUROREPAIR PC 96 WHG

Approved, highly resilient 2-component epoxy resin mortar for unreinforced concrete

EUROREPAIR PC 96 WHG is a solvent-free epoxy resin mortar system for repair of damage in concrete surfaces, especially edge repair at joints and re-profiling. Due to its high chemical resistance, compressive and flexural strength, the mortar is used in storage, filling and handling facilities for water-polluting substances. EUROREPAIR PC 96 WHG is approved by DIBt for use in the repair of unreinforced concrete in fuelling areas and storage, filling and handling facilities for water-polluting substances.



- Joint sealant: EUROLASTIC TC 30 G
- Primer: EUROLASTIC Primer U 12 G or EUROLASTIC Primer S2
- Backing material: Round PE cord (closed-cell)
- Mortar: EUROREPAIR PC 96 WHG
- Primer: EUROREPAIR HG 96 WHG

SYSTEM FEATURES

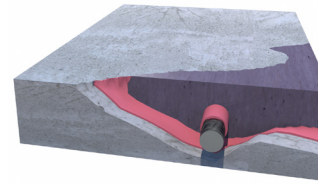
- Chemical-resistant
- Liquid-tight
- May be driven over by pneumatic and vulcanised tyres
- Fast curing
- Same modulus of elasticity as roadway concrete
- Very high compressive strength
- Easy application
- For unreinforced concrete
- National technical approval



EUROREPAIR PC 110 WHG

Highly resilient epoxy resin mortar for reinforced concrete

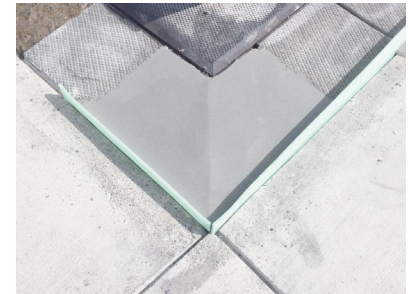
EUROREPAIR PC 110 WHG is a solvent-free, 2-component epoxy resin mortar that is especially suitable for the repair of reinforced concrete surfaces and precast reinforced concrete building components, e.g. heavy-duty slotted gutters, manhole covers, etc. in roadways, production and warehouse areas subject to high chemical stress. EUROREPAIR PC 110 WHG is approved by DIBt for use in the repair of reinforced concrete in fuelling areas and storage, filling and handling facilities for water-polluting substances.



- Mortar: EUROREPAIR PC 110 WHG
- Corrosion protection and bonding bridge: EUROREPAIR KS 110 WHG

SYSTEM FEATURES

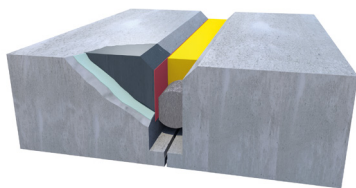
- Chemical-resistant
- Liquid-tight
- May be driven over by pneumatic and vulcanised tyres
- Premixed
- Pre-pigmented
- Fast curing
- Same modulus of elasticity as roadway concrete
- Very high compressive strength
- Easy application
- For reinforced concrete
- National technical approval



EUROREPAIR PC 96

Resilient epoxy resin mortar for unreinforced concrete

EUROREPAIR PC 96 is a solvent-free 2-component epoxy resin mortar system for repair of damage in concrete surfaces. The mortar is especially intended to edge repair at joints and re-profiling. Due to its high compressive and flexural strength, EUROREPAIR PC 96 is ideal for use on concrete warehouse and logistics areas.



- Joint sealant: EUROLASTIC TC 30 G
- Primer: EUROLASTIC Primer U 12 G or EUROLASTIC Primer S2
- Backing material: Round PE cord (closed-cell)
- Mortar: EUROREPAIR PC 96
- Primer: EUROREPAIR HG 96

SYSTEM FEATURES

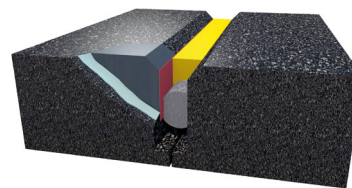
- May be driven over by pneumatic and vulcanised tyres
- Adjustable curing times
- Same modulus of elasticity as roadway concrete
- Very high compressive strength
- Easy application
- Water-impermeable
- MEB and TP-BEB RH-StB02 compliant



EUROREPAIR PC 96 AS

Premixed, pre-pigmented 2-component epoxy resin mortar for renovation of asphalt surfaces

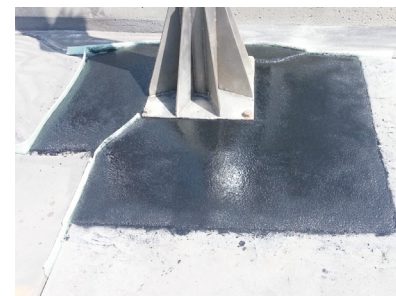
EUROREPAIR PC 96 AS is a solvent-free epoxy resin mortar system especially developed for re-profiling joint edges and the renovation of breaks in asphalt surfaces. Due to its high compressive and flexural strength, EUROREPAIR PC 96 is ideal for use on highly stressed asphalt traffic areas. This epoxy resin mortar can be used in various temperature ranges using different hardener systems.



- Joint sealant: EUROLASTIC TC 20 G
- Primer: EUROLASTIC Primer U 12 G AS
- Backing material: Round PE cord (closed-cell)
- Mortar: EUROREPAIR PC 96 AS
- Primer: EUROREPAIR HG 96 AS

SYSTEM FEATURES

- May be driven over by pneumatic and vulcanised tyres
- Adjustable curing times
- Plasticised
- Easy application
- Water-impermeable

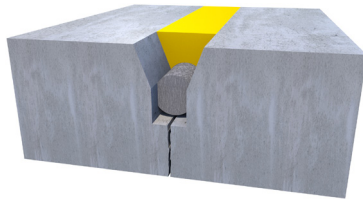


System solutions for highly stressed joints in air traffic areas

EURODUR EPH 0402 crackfit

Impact-resistant, chemical-resistant
2-component epoxy resin hybrid

EURODUR EPH 0402 crackfit is a high-performance 2-component epoxy resin hybrid for the closure of mechanically stressed cracks and corner joints in concrete surfaces. The grout is also excellent for pouring over sensor cables in walkways and traffic areas. The very short reaction time guarantees fast re-commissioning of the area.



- Grout: EURODUR EPH 0402 crackfit
- Backing material: Round PE cord (closed-cell)

SYSTEM FEATURES

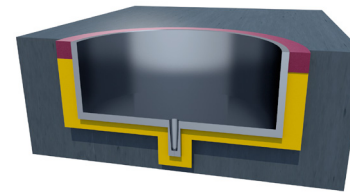
- Chemical-resistant
- May be driven over by pneumatic and vulcanised tyres
- Tough-resilient
- Locally repairable
- High notching resistance
- Weatherproof
- Very impact-resistant
- Self-levelling



EURODUR EPV 0411 groundfix

Highly reactive, chemical-resistant
2-component epoxy resin hybrid

EURODUR EPV 0411 groundfix is a 2-component epoxy resin hybrid with high chemical and mechanical resistance and extremely good adhesion properties on metals and concrete. Its outstanding ability to be ground without smearing should also be emphasised. Due to the 2-component system, fast curing and thus short blocking periods are guaranteed. The epoxy resin hybrid is especially suitable for the fixing and strong anchoring of metal building components, built-in casings in concrete surfaces for inset lights and anchor plates.



- Final grout: EURODUR EPV 0411 groundfix
- Fixing grout: EURODUR EPV 0411 groundfix
- Setting mortar: EUROREPAIR PC 96

SYSTEM FEATURES

- Highly reactive
- Chemical-resistant
- Exothermic reaction with low heat generation
- Very impact-resistant
- Very good adhesion to metal and concrete
- Temperature-resistant from -40°C to +100°C
- Strong anchoring

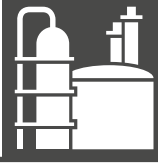


Core Capabilities



Areas subject to German Water Resources Act

Storage, filling and handling facilities for water-polluting substances Fuelling areas, de-icing areas, filling stations, refineries, tank farms, facilities for production, treatment and use of water-polluting substances



Wind power and agriculture

Areas for the storage and filling of liquid manure, manure, silage effluent, and solid dung, wind turbines, biogas plants, stable areas, horizontal silos



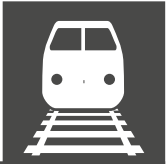
Traffic areas

Roads/ motorways, concrete barriers, parking garages, warehouse and logistics areas



Railway lines

trams, loading ramps



Air traffic areas

taxiways, runways, de-icing areas, fuelling areas



Industrial and trade areas

Storage areas, scrap yards, logistics areas, production areas, with areas used by forklifts



Parking areas

Parking garages, underground garages



Construction

Facades, balconies, joints, precast concrete apartment buildings





EUROTEAM Bauchemie GmbH
An der Mühle 1
D-15345 Altlandsberg
Tel.: +49 (0) 33438/1479-0
Fax: +49 (0) 33438/1479-29
info@euroteam-bauchemie.de