

 **GERMAN  
ENGINEERED.**

**EXPERIENCE  
THE  
DIFFERENCE**



**EUROTEAM**



**EUROTEAM** **50** *Jahre*  
est. 1974



## WHO ARE WE

We are Europe's leading manufacturer of construction chemical polysulfide products in the field of sealing surfaces exposed to high chemical, mechanical, and weather-related stresses.

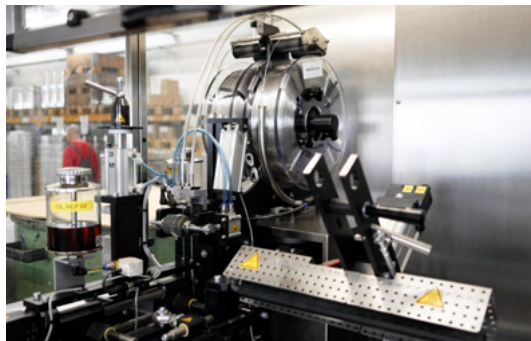
With our „High Performance“ sealants and joint tapes based on polysulfide, we set standards in chemical and weather resistance and are industry leaders in these areas.

With over 50 years of experience, we not only set benchmarks in the performance of our products but also in their application and processing. Through our self-developed processing machines and equipment, we guarantee the highest processing quality and efficiency.

We supply our customers worldwide with our specialized products and also offer on-site training for staff on application and processing.

**EUROTEAM** **50** *Jahre*  
est. 1974









## FIELDS OF EXPERTISE



### AIRCRAFT OPERATING AREAS



### TRANSPORTATION ROUTES



### RAILWAY SYSTEMS





## CHEMICAL & PETROCHEMICAL INDUSTRY



## WAREHOUSE & LOGISTICS



## HIGH-RISE CONSTRUCTION







# AIRCRAFT OPERATING AREAS

## **JOINT SEALANTS** – EUROLASTIC TC 30 TRAFFIC + EUROLASTIC 20 G

Self-leveling, chemical- and weather-resistant 2-component sealant based on polysulfide.

## **CABLE JOINT COMPOUND** – EUROLASTIC TC 15 G

Fast-curing and colored 2-component encapsulating compound based on polysulfide

## **CRACK REPAIR COMPOUND** – EURODUR CRACKFIT AUF EPH-BASIS

Flexible, fast-curing 2-component encapsulating compound based on EPH (epoxy phenolic hybrid)

## **REPAIR MORTAR** – EUROREPAIR PC 96

High-strength, fast-curing repair mortar based on epoxy resin.

## **LAMP ENCAPSULATION COMPOUNDS** – EURODUR EPV 0411

Electrically insulating, fast-curing 2-component potting compound based on epoxy resin.

## **CAMOUFLAGE AND PROTECTIVE COATINGS** – EURODUR D2 PROTECT

Heat-resistant and anti-slip coating for civil and military airfield surfaces

## **CHEMICAL ANCHORS** – EURODUR FORCE FIT

High-strength, styrene-free injection mortar based on vinylester resin, tested for the highest load classes





# TRANSPORTATION ROUTES

**JOINT SEALANTS** – EUROLASTIC TC 30 TRAFFIC + EUROLASTIC 20 G  
Self-leveling, chemical- and weather-resistant 2-component sealant based on polysulfide.

**CRACK REPAIR FOR CONCRETE** – EURODUR CRACKFIT  
Fast-curing and flexible 2-component encapsulating compound based on EPH (epoxy phenolic hybrid)

**CRACK REPAIR FOR ASPHALT** – EUROLASTIC ASPHALT SEALER  
Fast-curing and flexible 2-component encapsulating compound based on polymer-bitumen

**REPAIR MORTAR** – EUROREPAIR PC 96  
Fast-curing, high-strength, and weather-resistant 2-component ready-mixed mortar based on epoxy resin

**CONCRETE JOINT SEALING** – EUROTEK BSW WALLPROTECT  
Elastic, highly UV- and weather-resistant adhesive joint tapes based on polysulfide

**CHEMICAL ANCHORS** – EURODUR FORCE FIT  
High-strength, styrene-free injection mortar based on vinylester resin, tested for the highest load classes







# RAILWAY SYSTEMS

## **RAIL JOINT ENCAPSULATION** – EUROLASTIC TC 30 G RAIL

Fast-curing and highly weather-resistant 2-component sealant based on polysulfide

## **SUPPORT PROFILE FOR RAIL ENCAPSULATION** – POLYFALTTRAPEZ

Prefabricated support profile for rail encapsulation based on polysulfide

## **RAIL JOINT REPAIR** – EUROREPAIR PC 96 AS

Flexible 2-component epoxy resin mortar hybrid for the repair of rail joint areas as well as asphalt and cast asphalt surfaces

## **REPAIR MORTAR** – EUROREPAIR PC 96

High-strength, fast-curing, and weather-resistant 2-component ready-mixed mortar based on epoxy resin







# CHEMICAL & PETROCHEMICAL INDUSTRY

## **JOINT SEALANTS** – EUROLASTIC TC 30

Highly chemical- and weather-resistant, elastic 2-component sealant based on polysulfide

## **JOINT PROFILES** – EUROX EDS

Highly mechanically load-bearing and shock-resistant stainless steel hybrid joint profiles

## **CRACK REPAIR COMPOUNDS** – EUROLASTIC TC 30 S

Highly chemical- and weather-resistant, elastic 2-component encapsulating compounds based on polysulfide

## **REPAIR MORTAR** – EUROREPAIR PC 96 WHG

Highly chemical- and weather-resistant 2-component ready-mixed mortar based on epoxy resin

## **JOINT TAPES** – EUROTEK TK FUGENBAND WHG

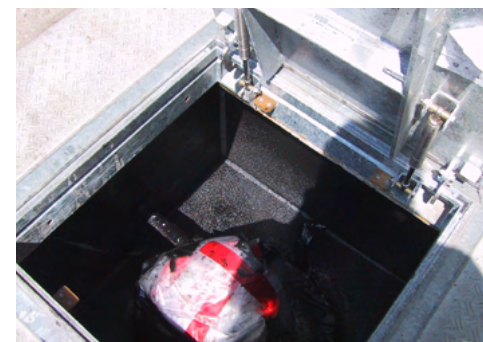
Highly chemical- and weather-resistant adhesive joint tapes based on polysulfide

## **SHAFT AND SURFACE SEALING** – EUROTUX TC 97 WHG

Highly chemical- and weather-resistant, flexible surface sealing based on polysulfide

## **CHEMICAL ANCHORS** – EURODUR FORCE FIT

High-strength, styrene-free injection mortar based on vinylester resin, tested for the highest load classes





# WAREHOUSE & LOGISTICS

## **JOINT SEALANTS** – EUROLASTIC TC 20 G

Fast-curing and highly durable, elastic 2-component sealant based on polysulfide

## **JOINT TAPES** – EUROTEK TK FUGENBAND

Elastic, highly UV- and weather-resistant adhesive joint tapes based on polysulfide

## **JOINT PROFILES** – EUROX EDS

Highly mechanically load-bearing and shock-resistant stainless steel hybrid joint profiles

## **JOINT BRIDGES** – EURODUR EPH 0403 JOINTFILL

Shock-resistant joint transition construction based on EPH (epoxy phenolic hybrid)

## **CONCRETE CRACK REPAIR** – EURODUR CRACKFIT

Fast-curing and flexible 2-component encapsulating compound based on EPH

## **ASPHALT CRACK REPAIR** – EUROLASTIC ASPHALT SEALER

Fast-curing and flexible 2-component encapsulating compound based on polymer-bitumen

## **REPAIR MORTAR** – EUROREPAIR PC 96

High-strength, fast-curing, and weather-resistant 2-component ready-mixed mortar based on epoxy resin

## **CHEMICAL ANCHORS** – EURODUR FORCE FIT

High-strength, styrene-free injection mortar based on vinylester resin, tested for the highest load classes

## **CERAMIC PROTECTIVE COATING** – EURODUR KERAPROTECT

Mechanically and highly durable coating with lotus effect (easy-to-clean) based on silane resin  
Colored and transparent.







# HIGH-RISE CONSTRUCTION

## **JOINT SEALANTS** – EUROLASTIC LM 100

Low-emission, universal, high-adhesion, elastic 1-component sealant based on SMP (Silyl Modified Polymer) for indoor and outdoor use

## **JOINT TAPES** – EUROTEC TK FUGENBAND

Elastic, highly UV- and weather-resistant adhesive joint tapes based on polysulfide

## **JOINT PROFILES** – EUROX EDS

Highly mechanically load-bearing and shock-resistant stainless steel hybrid joint profiles

## **BALCONY COATING** – EUROPUR

1K or 2K, highly UV-resistant, crack-bridging Colored

## **STONE CARPETS** – EUROPUR 0820/0825

Transparent, moisture-permeable, highly UV-resistant, and solvent-free binder for creating natural stone carpets

## **REPAIR MORTAR** – EUROREPAIR PC 96

High-strength, fast-curing, and weather-resistant 2-component ready-mixed mortar based on epoxy resin

## **CHEMICAL ANCHORS** – EURODUR FORCE FIT

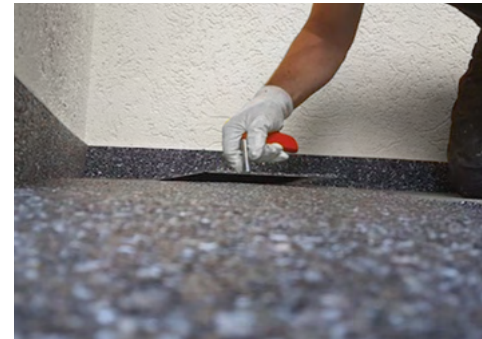
High-strength, styrene-free injection mortar based on vinylester resin, tested for the highest load classes

## **CERAMIC PROTECTIVE COATING** – EURODUR KERAPROTECT

Transparent or colored protective coatings with lotus effect (easy-to-clean) based on silane resin

## **ANTI-GRAFFITI** – EURODUR GRAFFITI-PROTECT

Durable anti-graffiti coating with lotus effect (easy-to-clean) based on silane resin





# PROCESSING TECHNOLOGIES 4.0 *engineered by* **EUROTEAM**



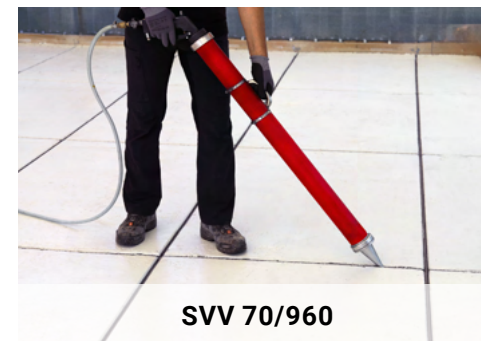
**JOINTMASTER 650**



**JOINTMASTER 250**



**JOINTMASTER 150**



**SVV 70/960**



**SVV 70/560**



**SVV 50/A**



### **JOINTMASTER 650**

A process-controlled mixing and dosing system for bubble-free processing of self-leveling polysulfide joint sealants from 200-liter drums. Optionally heated to shorten reaction and curing times.

### **JOINTMASTER 250**

Mixing and dosing system for the efficient processing of pourable polysulfide joint sealant in 20-liter containers. Portable in vans, trailers, or trucks.

### **JOINTMASTER 150**

Air-operated dispensing tank with lance for processing mixed pourable polysulfide joint sealants. Capacity: 10–40 liters.

### **SVV 70/960**

Used for processing pourable materials such as 2-component polysulfide joint sealants with a suction pressure of 6–7 bar, a discharge pressure of 3–6 bar, and a cylinder volume of approximately 4000 ml.

### **SVV 70/560**

Suitable for processing pourable materials such as 2-component polysulfide joint sealants with a suction pressure of 6–7 bar, a discharge pressure of 3–6 bar, and a cylinder volume of approximately 2000 ml.

### **SVV 50/A**

Pneumatic joint gun with a 600 ml capacity for processing pourable and thixotropic polysulfide joint sealants.

### **HB-365 AKN**

Manually operated joint gun with a 600 ml capacity for processing pourable and thixotropic polysulfide joint sealants.

For more information, useful tips & tricks, and detailed product specifications, please visit:



# QUALITY „MADE IN GERMANY“



**Since 1974**, we have been a leader in sealing solutions for airports, the chemical and petrochemical industries, as well as in traffic route construction, logistics, tramways, and building construction.

As a company monitored by TÜV and DIBt, our products and system solutions contribute to water and environmental protection, ensuring a cleaner environment for present and future generations.

**EUROTEAM Bauchemie GmbH**  
An der Mühle 1  
Germany, 15345 Altlandsberg  
Phone: +49 33438 / 1479 - 0  
Mail: [info@euroteam-bauchemie.de](mailto:info@euroteam-bauchemie.de)

**EUROTEAM ACADEMY**  
Johannes-Scheiffele-Straße 1  
Germany, 89407 Dillingen  
Phone: +49 9071 / 70557 - 0

**EUROTEAM Construction Chemicals LLC**  
Bayan Business Center, DIP1  
99999 Dubai  
Phone: +971 54 4999927  
Mail: [info@euroteam-group.ae](mailto:info@euroteam-group.ae)

